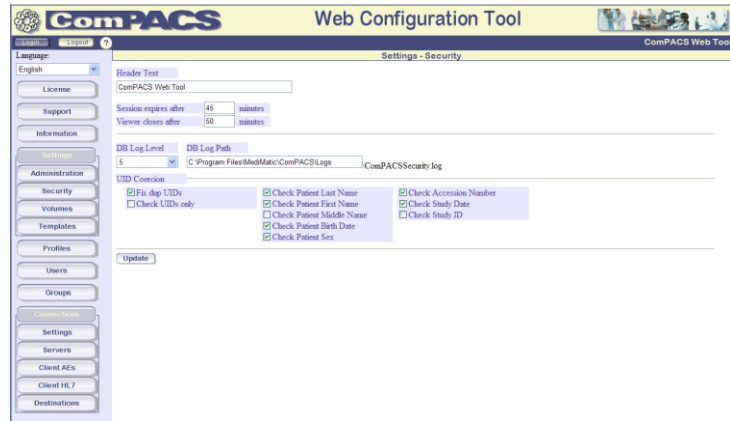
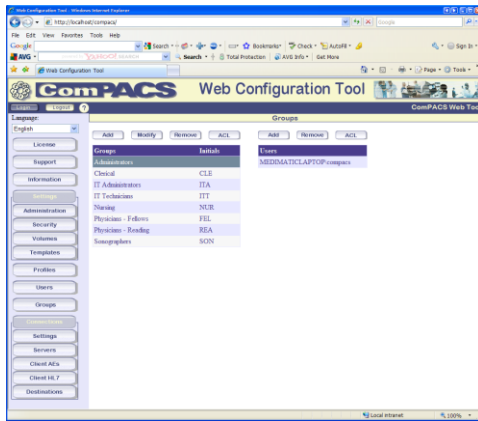




ComPACS® Security

ComPACS Security Module is a powerful, user configurable security tool to ensure complete safety of your patient's confidential information in addition to complying with the Health Insurance Portability and Accountability Act (HIPAA).

ComPACS Security Module can assign data access privileges individually or on multiple group levels ensuring users can only access data their position requires. Additionally, they can only perform actions on that data as their position requires. ComPACS tracks and logs all access and modification history and can restrict unauthorized viewing.



To ensure compatibility with possible existing IT security, all user accounts are fully integrated with Microsoft® Windows Active Directory. Automatic session and viewer time-outs can be set to match a facilities policy.

ComPACS Security uses a unique new generation study ACL (Access Control List) technology to manage user or group access privileges on each individual study stored in the database. With this novel and granular technology ComPACS facilitates secure Health Information Exchange with other facilities or referring physicians.

System Requirements

ComPACS Security – Rev. 10.5

- Integrates in ComPACS Server or ComPACS Archive without additional system requirements.
- Included in all levels of ComPACS Servers.
- Upgradeable feature in ComPACS Archive.