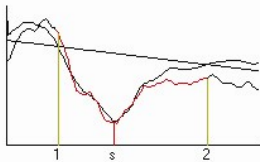


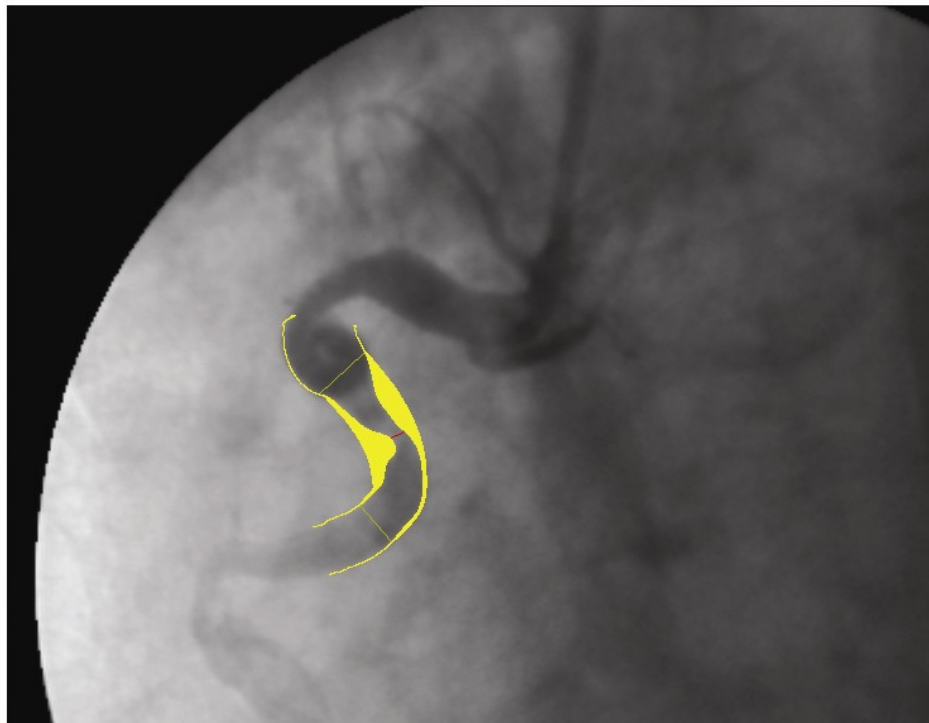
ComPACS® QCA

ComPACS QCA software module allows for Quantitative Coronary and vessel Analysis on angiographic images. The analysis module is available for the entire series of ComPACS Workstations allowing advanced measurements to be performed from anywhere via intranet or a remote secure internet connection.

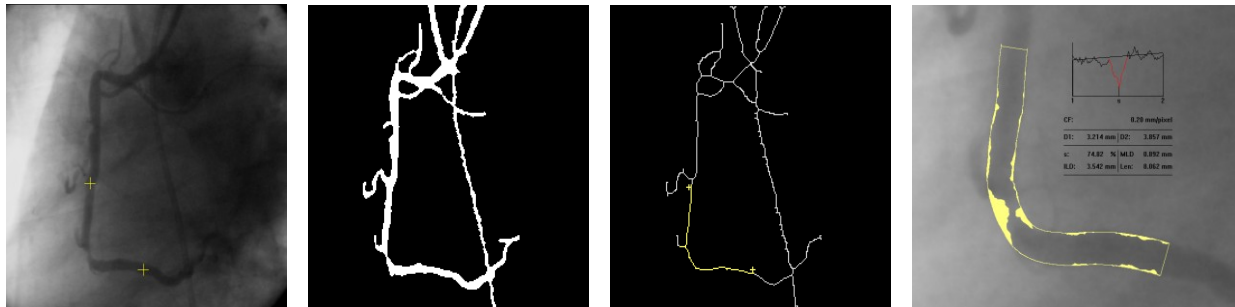


CF:	0.2287 mm/pixel	
D1:	6.264 mm	D2: 3.694 mm
Plaque:	35.35 mm ²	
s:	75.23 %	MLD: 1.264 mm
IRD:	5.101 mm	Len: 16.637 mm

Notes:



Unlike other solutions, ComPACS QCA Software automatically extracts the coronary tree, necessary to allow for deterministic, user independent results. The operator needs to select two points in the image to be analyzed, above and below the lesion. The points are only used to limit the region of interest in which the analysis on the a priori extracted coronary skeleton is performed. Since the operator cannot alter or influence the automatic process, the results are operator independent and thus completely reproducible.



The program computes the vessel dimensions and automatically identifies the stenosis and the normal profile. Furthermore a densitometric analysis is performed to provide additional information useful to identify possible mismatches with the geometric profile useful in interventional procedures.

All measured and derived data automatically populates a report and it can be exported in standard formats, including Microsoft® Excel, or custom formats on demand.

Main Features

- Off-line analysis from anywhere via intranet or a remote secure internet connection.
- Operator independent, skeleton detection.
- Deterministic (operator independent results).
- Automatic catheter based calibration.
- Geometric and densitometric analysis.
- Stent analysis.
- Automatic report printout and storage as DICOM file.
- Exports reports in common formats (for example Microsoft® Excel).

System Requirements

ComPACS QCA – Rev. 10.5

- Integrates in ComPACS Workstations editions without additional system requirements.
- ComPACS Web Workstation and Web Server required for secure remote access.
- Not compatible with ComPACS Web Viewer edition.